

Protecting nature wherever it occurs



A/Prof Carly Cook
School of Biological Sciences
Monash University

My journey...



THE UNIVERSITY
OF QUEENSLAND
AUSTRALIA



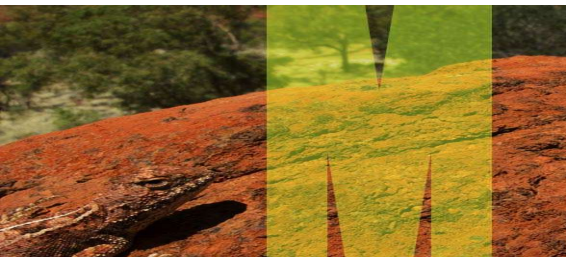
What are the challenges?

- On-going loss of biodiversity
- Action not aligned with the scale of the problem
- Political distraction and misdirection



EPBC Act reforms not implemented

National environmental standards that take into account 'cumulative impacts'




In 2024

25,769 hectares

- the equivalent size of 92 Sydney CBDs - of threatened species habitat were approved to be destroyed by the Albanese Government across 48 projects.

That's *more than twice* as much as in 2023.



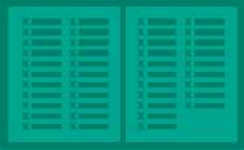
The koala had more habitat approved for destruction by the Albanese Government than any other threatened species.

An extraordinary 3,003 hectares of its home were consigned to the bulldozers.

That's an area three times the size of Sydney Airport and it's triple the amount of koala habitat that was approved to be destroyed in 2023.

14 species and ecological communities were 'uplisted'


- In other words, assigned to a category closer to extinction.



42 new species and ecological communities


were added to the national threatened species lists, with a total of 2,245 Australian plants, animals and ecosystems threatened with extinction at the time of this document's publication.

5 species and ecological communities were downlisted



40 more species and ecological communities

currently languish in the assessment doldrums, with no decision yet made about their status despite their assessment period expiring in 2024.



10 new climate-wrecking fossil fuel projects were approved.

None were rejected.



**AUSTRALIAN
CONSERVATION
FOUNDATION**

False dichotomy: Jobs versus environment -

Federal Labor moves to protect Macquarie Harbour salmon farming



Federal Labor will push through legislation which could derail a legal battle over salmon farming's impact on an endangered ray.

Tasmanian Salmon v Sewage: annual nitrogen pollution

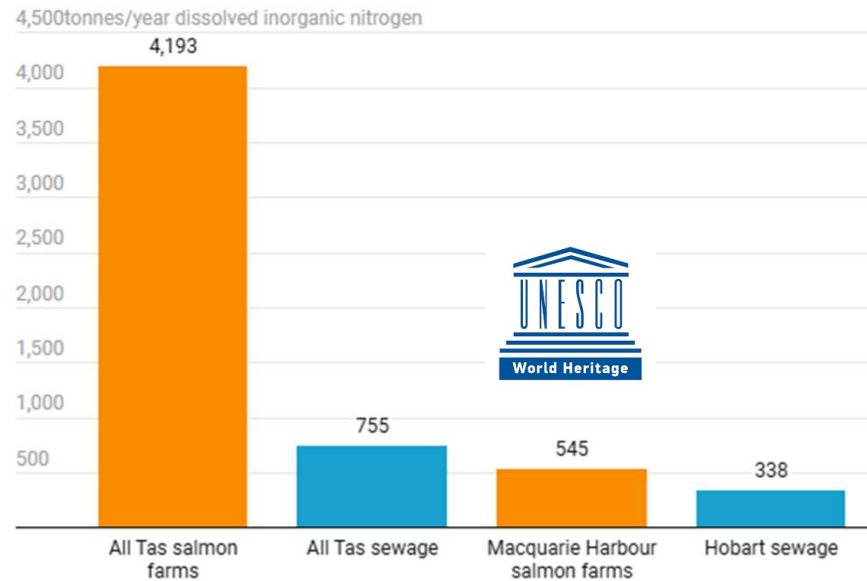


Chart: The Australia Institute · [Get the data](#) · Created with [Datawrapper](#)

Tasmanian salmon farms produce 6 times more pollution each year than Tasmania's entire sewage

State forest to national park

- Management problems



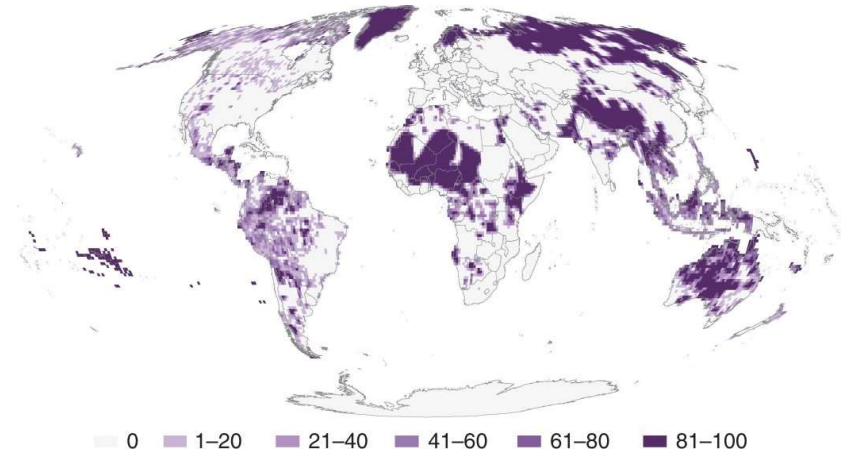
State forest to national park

- Conflicts with communities
- Spreading scarce resources more thinly



What are the solutions?

- Bold action is needed
- Think outside the box
- Protect nature where it occurs



37% of all remaining intact land is managed by Indigenous peoples



Garnett et al. (2018) Global importance of Indigenous lands for conservation. *Nature Sustainability*, 1: 369-374

What are the solutions?

Conserved areas

places outside protected areas
where biodiversity is being
effectively conserved



Surfing reserves

Sacred sites



Travelling stock routes



Sacred groves



Cemeteries



Local council
bushland reserves

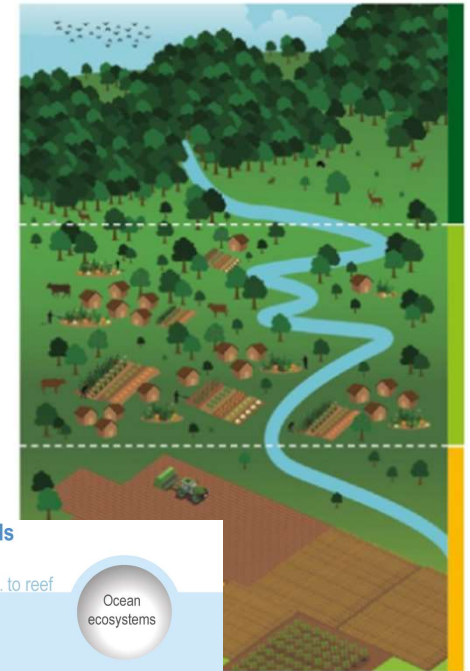


Roadside reserves

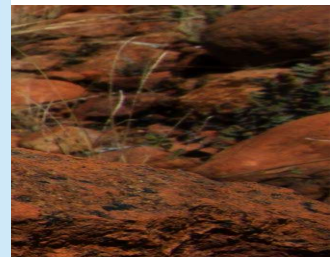
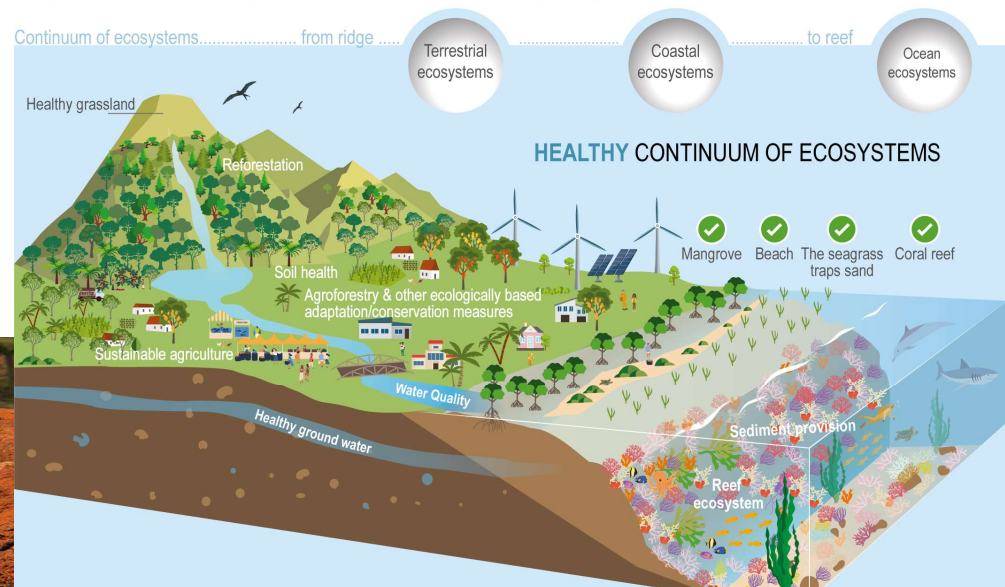
What are the solutions?

Conserved areas

Broadening the definition of conservation areas brings new opportunities to support nature



Ridge-to-reef interrelated protection services delivered by ecosystems on small islands



What gives me hope?



Where do women fit in?



Community leaders speaking for their culture and important places

Conservation science is dominated by women

